

www.pwc.ro

PwC Romania JumpStart to Trusted Business Advisor Programme

UBBFSEGA  FSEGA

In partnership with the Faculty of
Economics and Business Administration

pwc

Who is PwC?

PwC provides industry-focused **Assurance, Tax,** and business consulting (**Advisory**) services to build public trust and enhance value for our clients and our stakeholders.

- 157 countries
- 758 locations
- 195.433 professionals around the world

Our clients:

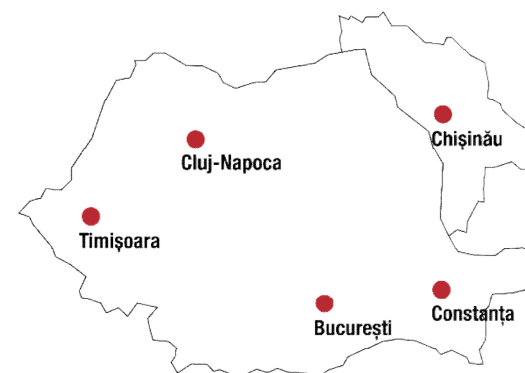
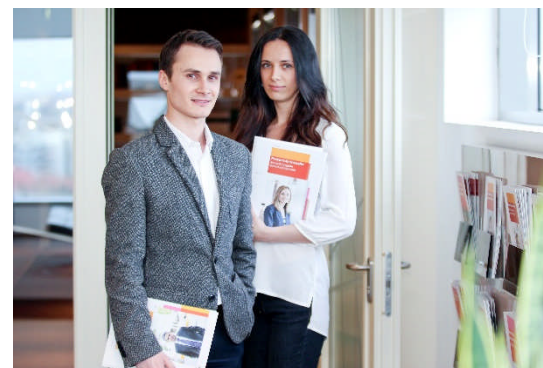
- 417 of Fortune Global 500 companies
- 462 of FT Global 500 companies



What do you know about PwC Romania?

PwC Romania is part of the CEE region – counting over 7000 professionals in 29 countries.

- 24 years in Romania
- 5 offices
- 3 Lines of Service: Audit & Assurance Services, Tax & Legal Services, Advisory Services
- 600 specialists



All of our people across our extensive network are working to create the value our clients are looking for.

JumpStart to Trusted Business Advisor

In partnership with the
Faculty of Economics and
Business Administration

Target audience:

3rd year bachelor students and
master students

The opportunity to:

- work in one of the PwC Romania offices
- benefit of training and counselling required in order to become a Trusted Business Advisor
- become a PwC intern
- become a PwC associate

Main advantage:

priority in the recruiting process



Thank you!

For more details:

- check our website at <http://www.pwc.com/jobs>
- we'll be back this autumn, we hope you'll join our presentations.

This publication has been prepared for general guidance on matters of interest only, and does not constitute professional advice. You should not act upon the information contained in this publication without obtaining specific professional advice. No representation or warranty (express or implied) is given as to the accuracy or completeness of the information contained in this publication, and, to the extent permitted by law, PwC Romania, its members, employees and agents do not accept or assume any liability, responsibility or duty of care for any consequences of you or anyone else acting, or refraining to act, in reliance on the information contained in this publication or for any decision based on it.

© 2015 PwC Romania. All rights reserved. In this document, "PwC" refers to PwC Romania which is a member firm of PricewaterhouseCoopers International Limited, each member firm of which is a separate legal entity.